

Experiment HH-13: iWire - 12-Lead Electrocardiograms (ECGs)

Exercise 1: ECG from the Chest Leads of a Resting Subject

Aim: To record Resting electrocardiograms from the six chest leads and determine the transition point.

Procedure

1. The recording of electrocardiograms from Leads I, II, Leads III, aVR, aVL, aVF, and the six chest leads (V1 through V6) will use the LabScribe2 software.
2. Make sure the lead wires are attached correctly for recording from Lead I, Lead II, and the other 6 “V” Leads.
3. Type Resting in the Mark box to the right of the Mark button.
4. After the subject has been sitting quietly for at least one minute, click the Record button on the LabScribe Main window. Immediately after starting to record, press the Enter key on the keyboard to mark the recording for a resting ECG of the 8 live leads and 4 calculated leads.
5. Record for at least 5 minutes to get a good stable recording of the resting ECG. Click the AutoScale buttons on all the channels to display the electrocardiogram data in a suitable manner ([Figure HH-13-L1](#)).

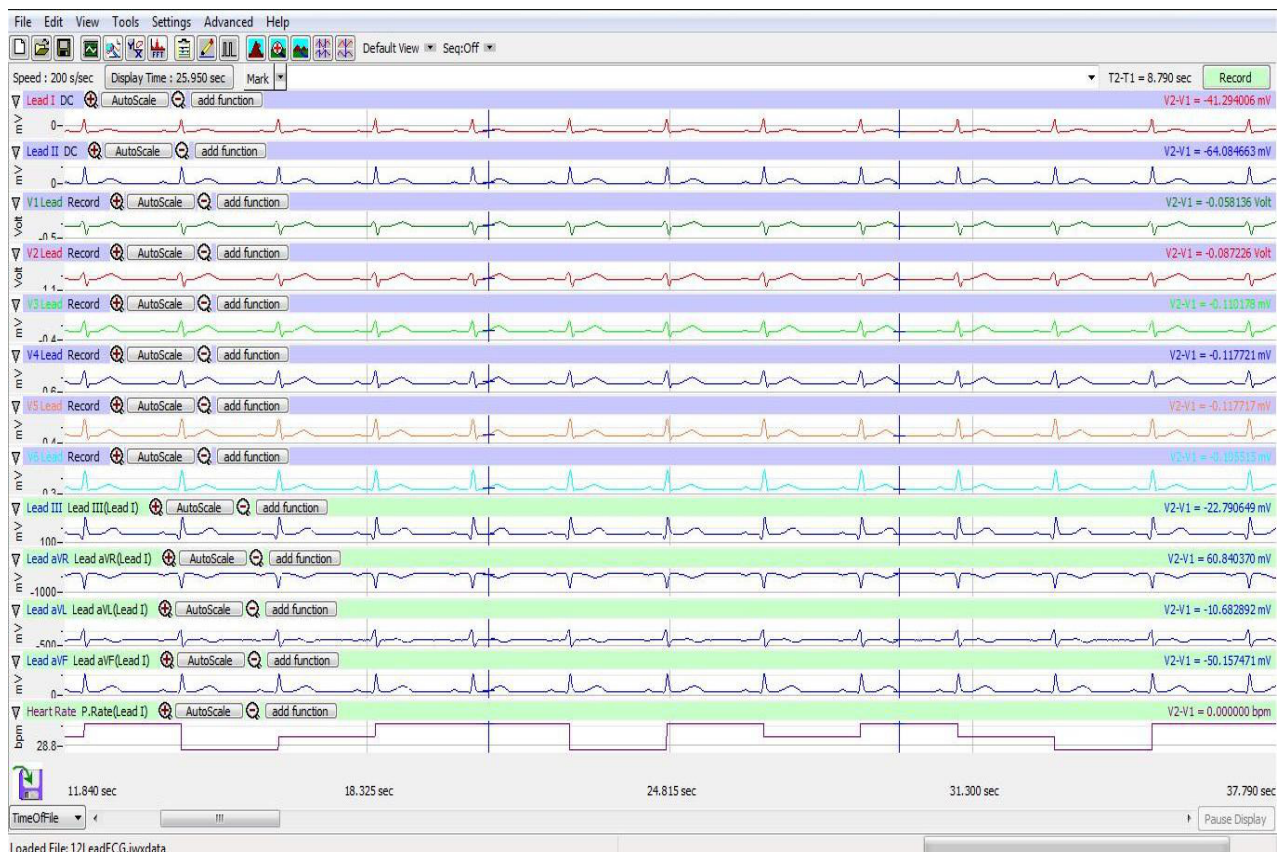


Figure HH-13-L1: The recording of a 12-lead electrocardiogram as shown in the Main window of LabScribe2. Note heart rate shown on the bottom channel.

6. Select Save As in the File menu, type a name for the file. Choose a destination on the computer in which to save the file, like your lab group folder. Designate the file type as *.iwxdata. Click on the Save button to save the data file.

Data Analysis

1. Click the 2-Cursor icon ([Figure HH-13-L2](#)) so that two vertical lines appear over the recording window.
2. Scroll through the this section of data and find an area with at least five or six exemplary ECG/pulse cycles in succession.
3. Use the Display Time icons to adjust the Display Time of the Main window to show at least five complete ECG/Pulse cycles on the Main window. Five adjacent ECG/Pulse cycles can also be selected by:
 - Placing the cursors on either side of a group of four complete ECG/Pulse cycles.
 - Clicking the Zoom between Cursors button on the LabScribe toolbar to expand the segment with the five selected ECG/Pulse cycles to the width of the Main window.
5. Click the Analysis icon to display the data in the Analysis window.

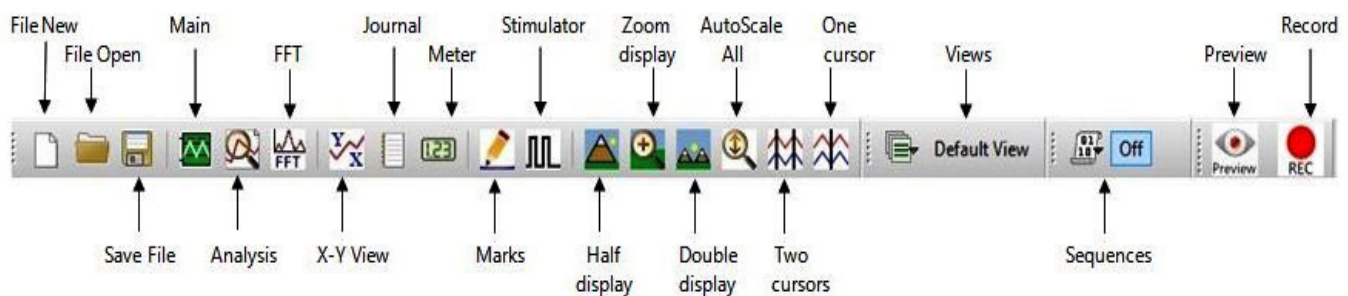


Figure HH-13-L2: The LabScribe2 toolbar.

6. Look at the Function Table that is above the uppermost channel displayed in the Analysis window. The name of the mathematical functions used in the analysis, V2-V1, T2-T1, and Mean appears in this table. The value for these functions are seen in the table across the top margin of each channel ([Figure HH-13-L3](#)).
7. Once the cursors are placed in the correct positions for determining the amplitudes, V2-V1, the values of the amplitudes can be recorded in the on-line notebook of LabScribe by typing their names and values directly into the Journal, or on a separate data table.
8. The functions in the channel pull-down menus of the Analysis window can also be used to enter the names and values of the parameters from the recording to the Journal. To use these functions:
 - Place the cursors at the locations used to measure the amplitudes of the waves in the ECG cycle.

- Transfer the name of the mathematical functions used to determine the amplitudes to the Journal using the Add Title to Journal function in the Tools pull-down menu.
- Transfer the values for the amplitudes to the Journal using the Add Ch. Data to Journal function in the Tools pull-down menu.
- To transfer the image to the Journal, use the Add Image to Journal function in the Tools pull-down menu.

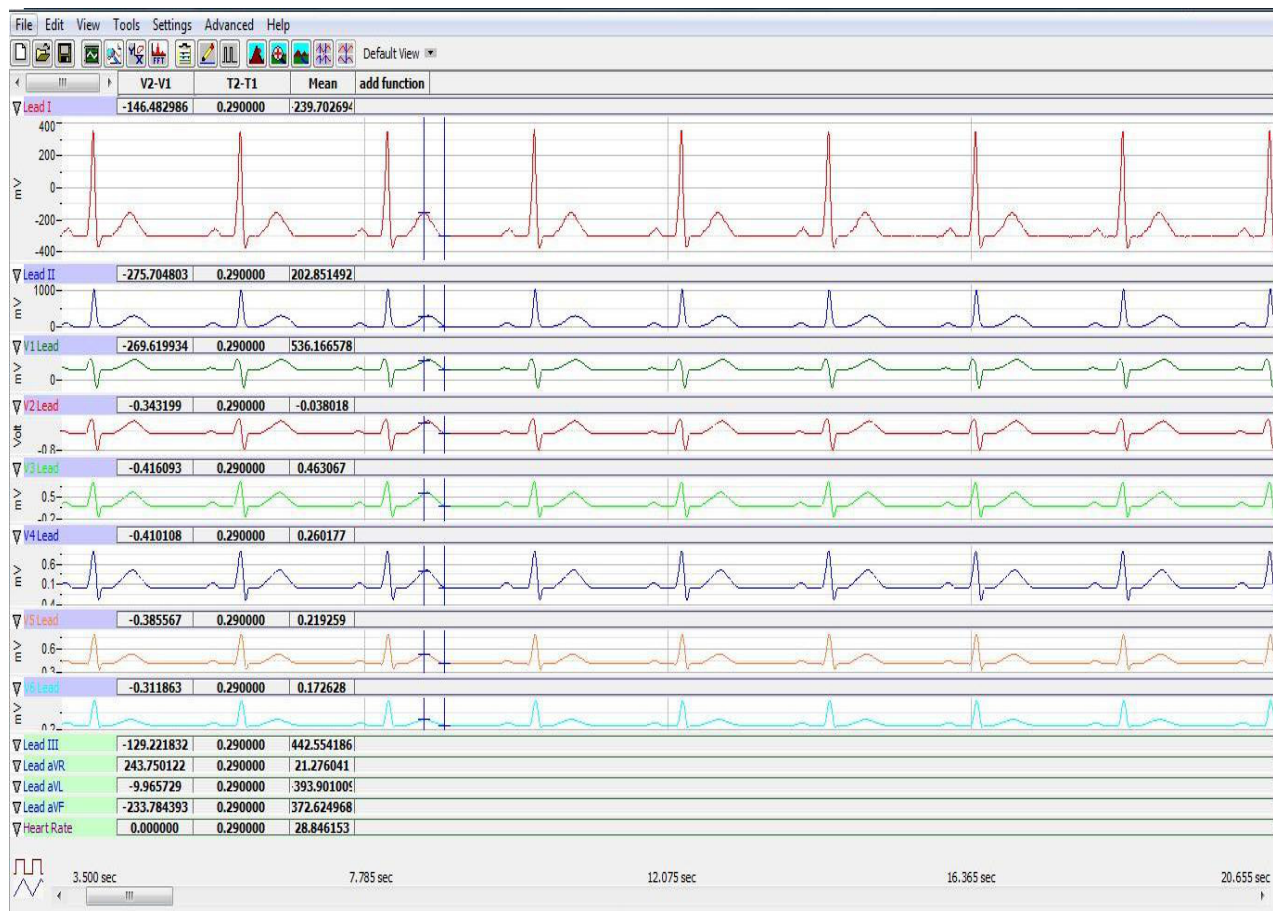


Figure HH-13-L3: In the Analysis window, the electrocardiogram showing the cursors in position to measure the amplitude (V2-V1) of a T-wave. Note: some chest leads not shown.

9. Use the mouse to click and drag the cursors across the section of data for Resting ECG to measure:
 - the amplitude, V2-V1, of five adjacent R waves in the ECG from Lead I, Lead II and the V1-V6 chest leads. The amplitude is measured from the onset of the Q wave to the peak of R wave. Data from Lead III, aVR, aVL and aVF may also be collected.
 - the amplitude, V2-V1, of five adjacent P waves in the ECG from the same section of data. The amplitude is measured from the baseline, between the T and P waves, to the peak of P wave. Data from Lead III, aVR, aVL and aVF may also be collected.

- the amplitude, V2-V1, of five adjacent T waves in the ECG from the same section of data. The amplitude is measured from the baseline to the peak of T wave. Data from Lead III, aVR, aVL and aVF may also be collected.

- Click the Main Window icon from the LabScribe toolbar to go back to the main recording window.
- Calculate the average amplitudes of the P, R, and T waves for each lead. Enter these values into the table ([Table HH-13-L1](#)).
- Find the transition point of the subject by examining the recordings from the six chest leads. Find the lead where the R wave is equal in magnitude to the S wave but in the opposite direction.

Questions

- From which leads are inverted P and T waves recorded? From which leads are inverted R waves recorded?
- From which lead is the amplitude of the R wave equal, and opposite in direction, to the S wave?
- Which lead is over the anterior edge of the interventricular septum?

Table HH-13-L1: The average amplitudes (in millivolts) for each of the waves recorded from each lead.

Average Amplitudes	P Wave	R Wave	T Wave
Lead I			
Lead II			
V1			
V2			
V3			
V4			
V5			
V6			
Lead III			
aVR			
aVL			
aVF			

Exercise 2: ECG from the Chest Leads of Other Students

Aim: To record electrocardiograms from the six chest leads of other subjects and determine their transition points.

Procedure

1. Disconnect the leads from the first volunteer's electrodes and place them on the electrodes of a second student.
2. Follow the procedures in Exercise 1 to record electrocardiograms from the six chest leads of the new subject.
3. Repeat the procedures until all subjects have recorded their chest lead electrocardiograms.

Data Analysis

Make the same measurements as done in Exercise 1.

Questions

1. Do the R waves, from the same lead position, go in the same direction for all subjects? The P waves? The T waves?
2. What would cause the same type of wave from the same lead to go in the opposite direction in different subjects?
3. Do all subjects have the same transition point? Which leads were found to be the transition points in the subjects tested? What could cause a difference in the transition points?

Exercise 3: ECG Hypothesis, Data Collection and Analysis

Aim: To have students design their own experiment based on their knowledge of what may alter a person's ECG.

Procedure

1. Formulate a hypothesis where you would expect to see changes in the subject's ECG.
2. Make sure to present this hypothesis to your instructor and get permission to do the experiment prior to continuing with your experiment.
3. Follow the procedures in Exercise 1 to record an ECG from your subject and collect data during the testing of your hypothesis. Timing changes will be the most significant observations.

Data Analysis

1. Make the same measurements as done in Exercise 1.
2. Create a data table in which to record your data.
3. Compare your data to the data recorded in Exercise 1.

Questions

1. What happened to the subject's ECG during the testing of your hypothesis?
2. What parameters changed? How did they change?
3. Did your hypothesis get the expected results? Why or why not?

Exercise 4: Using the 12-Lead ECG Simulator

Aim: To record simulated electrocardiograms showing a variety of abnormal rhythms and to be able to understand the differences between these and normal sinus rhythm.

ECG Cable Setup

1. Plug the snap leads from the iWire-ECG12 to the appropriate snaps on the ECG-SIM-1200 - ECG Simulator.
 - The four limb leads will be connected on the right side of the simulator - RA, RL, LA and LL.
 - The six chest leads will be connected to the left side of the simulator - V1, V2, V3, V4, V5, and V6.
2. Make sure the snaps are securely fastened to the simulator.

Procedure

1. Retrieve the ECG-SIM-1200-12Lead ECG Simulator ([Figure HH-13-L4](#)) and check to make sure the batteries have been installed properly.
2. Turn the unit on by pressing the On/Off button on the front of the unit. The light will glow on one of the selected rhythms.
3. Press NSR to select normal sinus rhythm.
4. Press the Record button to start the recording of normal sinus rhythm. Record for a minimum of 30 seconds to get a good recording of a normal cardiac rhythm.
5. Press Stop to halt the recording. Press Save to save your data.



Figure HH-13-L4: ECG-SIM-1200

6. Choose another rhythm to record by pressing the button associated with the cardiac rhythm you wish to examine.
 - As examples:
 - Select 1st RBBB for 1st right bundle branch block
 - Select AFIB for atrial fibrillation
 - Select S Tach Ant ST+ for sinus tachycardia

Note: Any rhythm can be selected by pressing the button associated with the cardiac rhythm you wish to view.

7. Repeat steps 4-6 to continue recording a variety of cardiac rhythms. It is suggested that at least 5 different rhythms are recorded to gain an understanding of the variety of cardiac arrhythmias that may present themselves in a clinical situations.

Data Analysis

1. Make the same measurements as done in Exercise 1 with the addition of measuring the duration of each wave form.
2. In the Analysis window, click add function to add the General T2-T1 function for determining the duration of each wave.
 - Place the cursors on either side of the P-wave to find the Pwave duration.
 - Place one cursor on the Q-wave and the second cursor on the S-wave to determine the duration of the QRS complex.

- Place the cursors on either side of the T-wave to find the Twave duration.
3. Create a data table in which to record your data.
 4. Compare your data to the data recorded in Exercise 1 or to the normal sinus rhythm recorded using the ECG-SIM-1200 simulator ([Figure HH-13-L5](#)) .

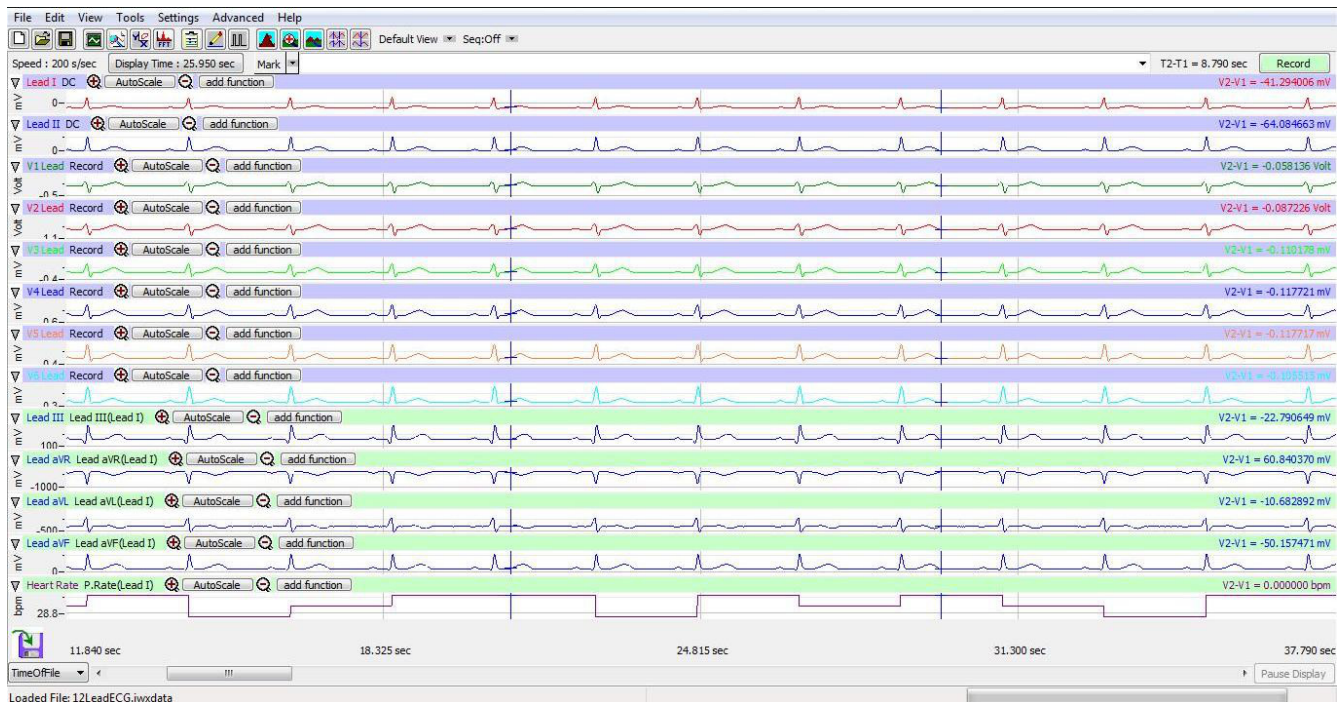


Figure HH-13-L5: Normal Sinus Rhythm recorded using the ECG simulator.

Questions

1. Based on normal sinus rhythm - compare the 5 different arrhythmias recorded.
 - compare the P-wave amplitude and duration and discuss how and why the values are different from a 'normal' P-wave.
 - compare the T-wave amplitude and duration and discuss how and why the values are different from a 'normal' T-wave.
 - compare the QRS duration and discuss any differences.
2. Note any physiological factors that may cause the arrhythmias that you looked at.
3. Discuss the medical interventions that are available to correct the arrhythmias. Include both medical and surgical options.